



Working Together...To Help Others



Product Catalog

THE MAN HIMSELF

After **NINE DECADES** on the planet and **SIX+** in the business, we finally corner our founder **DR. BOB MCDAVID, JR.** Our *Vice President of Global Marketing*, **MARY HORWATH**, sits down with Dr. Bob at the 2015 *National Athletic Trainers Association* convention in St. Louis.

Mary Horwath: You literally started an industry with the first lateral knee brace. Where did this idea come from?

Dr. Bob McDavid: I have no idea. I would regularly have the knee up on the chalkboard while teaching and one day I started building a lateral structure around it until three or so years later, it all made sense.

First lateral knee guard circa 1970



MH: How did you test those first prototypes?

DBMc: Originally, on my kids. They'd wear the brace and I had someone stand on it...from both the lateral and medial sides, of course.

MH: Well, I can assure our McDavid customers that our testing practices have come a long way. So beyond your kids, who were some of the first athletes to use your brace?

DBMc: Local amateurs and athletes from Indiana State. Early on we did a trade show in Texas and really caught on there. They love their football in Texas.

MH: Did you experience much resistance to this new-fangled device?

DBMc: People were skeptical. Up until then the only support out there was taping. Everyone figured a brace would restrict movement. Once people realized it didn't slow them down, it was well accepted. I still feel it's the best device on the market—but I may be biased.

MH: Do you recall any early ideas that just didn't pan out as well; something still on your chalkboard?

DBMc: I've played around quite a bit with support for tennis elbow and general performance for the tennis stroke. But I found that everything, so far, has been too restrictive. Good for the forehand, not so much for the backhand...and you need both.

MH: Something to keep you busy. By the way, did you play football?

DBMc: I was a walk-on at Notre Dame. I played on what we called the "hamburger squad." We would regularly scrimmage the varsity. That was 1946, a year we won the National Championship.

MH: I don't think I have to ask why it was called the "hamburger squad."

DBMc: Well, it wasn't quite like "Rudy."

MH: We heard that Father John J. Cavanaugh, President of Notre Dame from 1946 – 1952 once said, "McDavid is the best product we've ever produced." Is this true?

DBMc: Yes, but Father Cavanaugh was known to be loose with the truth.

MH: In all the years since you introduced the lateral knee brace in



1969, what have you seen as some of the biggest innovations?

DBMc: McDavid has always been focused on injury prevention. But, today there's a lot more emphasis on the psychological side of things and I think that's valid. If an athlete feels that he or she can do more because they're wearing compression or Hex protection, that's real. Confidence is important.

MH: At the risk of alienating some of our customers, do you have a favorite team and/or athlete?

DBMc: I've always been a Yankees fan. Miss that Jeter. My alma mater Notre Dame, of course. Loved Indiana basketball and Larry Bird—that unassuming, country boy who did well.

MH: I think we might say the same about you. So in 90 years, what's been your favorite year?

DBMc: This one.

Enough said. Thanks for everything Dr. Bob.

— Team McDavid

SPORTMED®



SUBJECT	Injury Prevention/Maintenance/Recovery		
---------	--	--	--

GET TO THE POINT

This company was **LITERALLY** built on the **FIRST** working knee brace to be used in collegiate and professional football. *Knee—PROBLEM. McDavid—SOLUTION.* We understand injuries, issues and the physical demands of training and competing. We directly apply years of **EXPERIENCE** and forward-thinking **KNOWLEDGE** into every game-saving product we create. We **INVENTED** SportMed and in 2016 we continue to **REINVENT** it. Contained within these pages is exciting news on a variety of next generation innovations.
Questions—ANSWERS—McDavid—DONE.

	ANKLE			
	KNEE	7 PRODUCTS		
	THIGH / CALF	13 PRODUCTS		
	BACK / WAIST	1 PRODUCT		
	ARM	2 PRODUCTS		
	TRAINING ACCESSORIES	8 PRODUCTS		
		6 PRODUCTS		

PROTECTION

SELECTION

From bothersome aches to burdensome injuries, McDavid covers the SportMed® spectrum. Choose from our **THREE LEVELS OF PROTECTION:**



PRIMARY LEVEL 1

BEST FOR:

- Minor pain and sprains
- Promotes healing through the use of neoprene thermal therapy and/or breathable elastic

Features sleeves and supports designed to deliver general-purpose protection and compression support. This is simple and cost effective management of minor pain and swelling associated with sprains, arthritis, bursitis, tendonitis or other chronic minor symptoms.



ADVANCED LEVEL 2

BEST FOR:

- Minor to moderate ligament instabilities or pain
- Promotes healing through the use of neoprene thermal therapy and/or breathable elastic

For management of minor to moderate symptoms associated with swelling and recovering sprains or chronic conditions such as arthritis, bursitis and tendonitis. Offering a wider range user adjustment of compression support, via additional straps, stays or gel buttresses.



MAXIMUM LEVEL 3

BEST FOR:

- Moderate to major instabilities and pain
- Includes features like hinges, splints, straps and stays for additional protection and support
- Neoprene promotes healing through therapeutic heat retention and soft tissue support

Best choice for proactive injury prevention and protection from excessive range of motion. Provides maximum vibration damping and support of joint capsules, bursae and related soft tissues. Top choice for management of chronic or post-surgical joint protection.

GET IT. FORGET IT.

195™ ANKLE BRACE

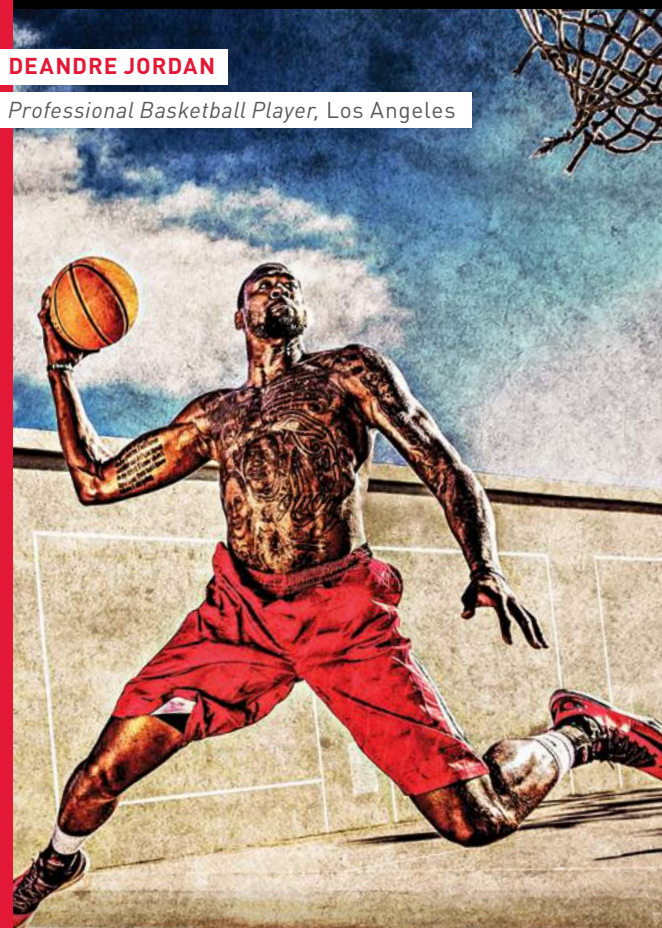
Our tour de force of **LIGHTWEIGHT** construction, **ULTRA-SUPPORTING** design and **EASE-OF-USE** reality.

In extensive university testing, our 195 was *proven* to make the wearer **THREE TIMES** less likely to experience ankle injuries over those poor souls not wearing our brace. (Full study available upon request.)

The 195 **SIMULATES** an athletic tape wrap, but unlike taping, our fully adjustable, figure-6 strapping system can be tightened **QUICKLY** and **EASILY** without shoe removal. There's nothing better on any shelf anywhere.

DEANDRE JORDAN

Professional Basketball Player, Los Angeles



THE 195™ ANKLE BRACE IS ANOTHER **ALL-STAR** IN OUR INDUSTRY-LEADING LINE OF SPORTMED® PRODUCTS. WE HAVE LED AND CONTINUE TO LEAD IN THE *PREVENTION, MITIGATION AND REHABILITATION* OF INJURIES FROM THE ANKLE ALL THE WAY UP. SPORT AND MED WILL ALWAYS SHARE AN OFFICE, A LAB AND A MINDSET AT MCDavid.



3 LEVEL 3: MAXIMUM PROTECTION

195™ Ankle Brace w/ straps

BEST FOR Helping to prevent and/or recover from common ankle sprains

- Athletes participating in an independent study at a major research university had 3x fewer injuries when wearing the 195
- Constructed of single-layer polyester fabric for full support and minimal weight
- Design simulates athletic tape with figure-6 strapping pattern
- Compression-comfort top strap for custom fit
- Fully adjustable without unlacing or removing shoe
- Ventilated tongue breathes with you
- Padded lining and reinforced closures
- Fits left or right

Colors: Black; Gray

Sizes: XS-XL

Content: 100% polyester—exclusive of trim/straps/cover fabric

Improve your odds x3



Clamshell Packaging

3 LEVEL 3: MAXIMUM PROTECTION

199 Ankle Brace / lace-up w/ stays

BEST FOR Helping to prevent and/or recover from common ankle sprains

- Spring steel medical stays for solid support
- Built of highly breathable two-layer polyester/vinyl mesh
- Ventilated tongue breathes with you
- Highly breathable lining and reinforced eyelets
- Fits left or right

Color: Black

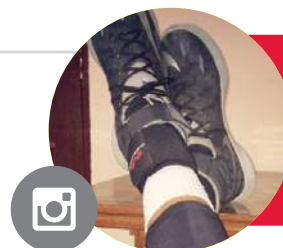
Sizes: 2XS*-XL (2XS not available in retail packaging)

Content: 50% PVC, 49% polyester, 1% rubber

Play heavy, feel light



Clamshell Packaging



GET SOCIAL

USER: SAMALFAR010

PRODUCT: 195

"Game time #ILoveThisGame"



2 LEVEL 2: ADVANCED PROTECTION

5122 Ankle Sleeve / 4-way elastic w/ figure-8 straps

BEST FOR » Moderate support and relief from pain associated with arthritis, bursitis and tendonitis

- 4-way stretch elastic material engineered for increased compression and fit without heat retention
- Wrap around figure-8 strap design provides added stability, support and comfort
- Medial and lateral gel buttresses apply targeted soft tissue supportive compression
- Ideal for those with neoprene allergies
- Fits left or right

Color: Black

Sizes: S-XL

Content: 62% nylon/38% spandex (elastane)—exclusive of trim/straps

Wear figure-8 with confidence

2 LEVEL 2: ADVANCED PROTECTION

5115 Ankle Sleeve / 4-way elastic w/ gel buttresses

BEST FOR » Support and relief from pain, swelling and inflammation due to tendonitis, arthritis or injury

- Highly engineered 4-way stretch elastic material for superior fit and compression with minimal heat retention
- Ideal for those with neoprene allergies
- Medial and lateral gel buttresses apply targeted soft tissue supportive compression
- Fits left or right

Color: Black

Sizes: S-XL

Content: 62% nylon/38% spandex (elastane)

Make a cool compression



Clamshell Packaging



Clamshell Packaging



2 LEVEL 2: ADVANCED PROTECTION

432 Ankle Support w/ figure-8 straps

BEST FOR » Minor to moderate ankle support plus relief from pain associated with arthritis and tendonitis

- Wrap-around figure-8 strap design provides compressive comfort and pain relief
- Exclusive 5-needle stitch for a flatter, cleaner and stronger seam
- Adjustable hook and loop closure
- Latex-free neoprene provides thermal compression
- Exterior layer of nylon fabric for durability
- Fits left or right

Color: Black

Sizes: S-XL

Content: 100% latex-free 3.2mm neoprene (CR)—exclusive of binding/straps/cover fabric

Figure 8 is your new lucky number

Clamshell Packaging



1 LEVEL 1: PRIMARY PROTECTION

431 Ankle Sleeve

BEST FOR » Relief from pain associated with arthritis and tendonitis; minor ankle support

- 4-way stretch facilitates comfort and compression in all directions
- Exclusive 5-needle stitch for a flatter, cleaner and stronger seam
- Latex-free neoprene provides thermal compression
- Exterior layer of nylon fabric for durability
- Fits left or right

Color: Black

Sizes: S-XL

Content: 100% latex-free 3.2mm neoprene (CR)—exclusive of binding/cover fabric

Salvation for the weak

Clamshell Packaging



1 LEVEL 1: PRIMARY PROTECTION

511 Ankle Sleeve / elastic

BEST FOR » Support and relief from pain associated with tendonitis, arthritis and minor injury

- Breathable non-neoprene knitted elastic construction
- Ideal for those with neoprene allergies
- Fits left or right

Color: Black

Sizes: S-XL

Content: 65% polyester/25% rubber/10% nylon

Fantastic in elastic

Clamshell Packaging



3 LEVEL 3: MAXIMUM PROTECTION

429 Knee Brace w/ polycentric hinges

BEST FOR » High-level support; improving medial and lateral stability, helping reduce injury and assist recovery

- Bi-lateral geared polycentric hinges for stability and free movement
- Engineered top and bottom straps assure personalized fit
- Latex-free neoprene provides thermal compression
- Open 360° padded buttress isolates and supports the patella
- Bound edges prevent irritation
- Perforated back panel provides heat and moisture management and all-around comfort
- Fits left or right

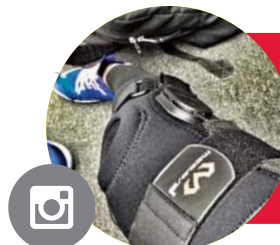
Color: Black

Sizes: S-2XL

Content: 100% latex-free 4.8mm neoprene (CR)—exclusive of binding/straps/cover fabric/hinges

Opponent brace thyself

 **Clamshell Packaging**



GET SOCIAL

USER: TIKI1983

"When your trainer blesses you with level 3 protection"



3 LEVEL 3: MAXIMUM PROTECTION

422 Knee Brace w/ dual disk hinges

BEST FOR Moderate medial and lateral support for improving stability; aids in recovery

- No gears; each sidearm is independently articulated with cushioned hyperextension stops
- McDavid's lightest hinge has wider arms to aid in maintaining strength
- Engineered straps assure personalized fit
- Latex-free neoprene provides thermal compression
- Open 360° padded buttress isolates and supports the patella
- Bound edges prevent irritation
- Perforated back panel provides heat and moisture management and all-around comfort
- Exterior layer of nylon fabric for durability
- Fits left or right

Color: Black

Sizes: S-2XL

Content: 100% latex-free 4.8mm neoprene (CR)—exclusive of binding/straps/cover fabric/hinges

Better hinge for your hinge



Clamshell Packaging



2 LEVEL 2: ADVANCED PROTECTION

425 Knee Support w/ stays & cross straps

BEST FOR Moderate support helping to relieve symptoms and aid recovery from chondromalacia, patellar subluxation and tendonitis

- Reinforced spring steel stays offer enhanced medial-lateral confidence
- Elastic cross straps for enhanced compression and added rotational and collateral ligament support
- Padded open buttress offers 360° support of the patella
- Top and bottom closures ensure outstanding fit
- Latex-free neoprene provides thermal compression
- Perforated back panel provides heat and moisture management and all-around comfort
- Exterior layer of nylon fabric for durability
- Fits left or right

Color: Black

Sizes: S-2XL

Content: 100% latex-free 4.8mm neoprene (CR)—exclusive of binding/straps/cover fabric

Stay knee stay



Clamshell Packaging



2 LEVEL 2: ADVANCED PROTECTION

421 Knee Support w/ stays

BEST FOR Moderate support helping to relieve symptoms and aid recovery from chondromalacia, patellar subluxation and tendonitis

- Padded buttress supports the patella
- Reinforced support with spring steel stays
- Elastic hook and loop straps ensure outstanding fit
- Latex-free neoprene thermal/compression
- Exterior layer of nylon fabric for durability
- Fits left or right

Color: Black

Sizes: S-2XL

Content: 100% latex-free 4.8mm neoprene (CR)—exclusive of binding/straps/cover fabric

Let us baby your knee



Clamshell Packaging



2 LEVEL 2: ADVANCED PROTECTION

419 Knee Support / adjustable

BEST FOR » Reducing symptoms of patellar tendonitis (runner's/jumper's knee), Osgood-Schlatter disease and patella tracking

- Movable padded buttresses for added compression and pain relief
- Adjustable hook and loop closure for custom fit
- Latex-free neoprene provides thermal/compression therapy
- Flat-seam construction for ultra comfort and contouring fit
- Fits left or right

EXCLUSIVE DESIGN

Color: Black

Sizes: S/M; L/XL

Content: 100% latex-free 3.2mm neoprene (CR)—exclusive of binding/straps/cover fabric

Stay in the action



Clamshell Packaging



2 LEVEL 2: ADVANCED PROTECTION

414 Knee Strap / patella

BEST FOR » Reducing symptoms of patellar tendonitis (runner's/jumper's knee), Osgood-Schlatter disease and patella tracking

- Tubular, non-slip buttress applies constant uniform compression at the patellar tendon
- Adjustable hook and loop closure for custom fit
- Fits left or right

Colors: Black; Scarlet; Royal; Gray

Size: Regular; Large (Black Only)

Content: 100% latex-free 3.2mm neoprene (CR)—exclusive of binding/cover fabric

Higher, further, better

414-01 Black

414-03 Royal

414-07 Gray

414-40 Scarlet



Clamshell Packaging



GET SOCIAL
USER: CREW_DELICIOUS
PRODUCT: 414
"Appreciate the support"



2 LEVEL 2: ADVANCED PROTECTION

5116 Knee Sleeve / 4-way elastic w/ gel buttress & stays

BEST FOR Moderate support and relief from pain associated with arthritis, bursitis and tendonitis

- 4-way stretch elastic material engineered for increased compression and fit without heat retention
- Reinforced with spring steel stays for added support and lateral movement
- Gel buttress targets soft tissue and patella support
- Ideal for those with neoprene allergies
- Fits left or right

Color: Black

Sizes: S-XL

Content: 62% nylon/38% spandex (elastane)

If your knees could thank you...
(that would be odd)

2 LEVEL 2: ADVANCED PROTECTION

5125 Knee Sleeve / 4-way elastic w/ gel buttress

BEST FOR Moderate support and relief from pain associated with arthritis, bursitis and tendonitis

- 4-way stretch elastic material for increased compression and fit without heat retention
- Gel buttress targets soft tissue and patella support
- Ideal for those with neoprene allergies
- Fits left or right

Color: Black

Sizes: S-XL

Content: 62% nylon/38% spandex (elastane)

Way better



Clamshell Packaging



Clamshell Packaging



1 LEVEL 1: PRIMARY PROTECTION

409 Knee Wrap / adjustable w/ open patella

BEST FOR » Minor support helping to relieve pain and promote healing of tendonitis, bursitis, arthritis and other non-specific knee conditions

- Adjustable hook and loop closure for custom fit
- Latex-free neoprene provides thermal/compression therapy
- Open knee design for added comfort around the patella
- Fits left or right

Color: Black

Size: One Size

Content: 100% latex-free 3.2mm neoprene (CR)—exclusive of straps/cover fabric

Wrap yourself in smart

 Clamshell Packaging



1 LEVEL 1: PRIMARY PROTECTION

404 Knee Sleeve w/ anterior patch & open patella

BEST FOR » Minor support helping to relieve pain and promote healing of tendonitis, bursitis, arthritis and other non-specific knee conditions

- Anterior patch adds compression and therapeutic heat
- Open knee design for added comfort around the patella
- Exclusive 5-needle stitch for a flatter, cleaner and stronger seam
- Seamless back-of-knee and anatomical design for added comfort
- Latex-free neoprene provides thermal/compression therapy
- Outer heavy-duty nylon fabric for durability
- Fits left or right

Color: Black

Sizes: S-2XL

Content: 100% latex-free 3.2mm neoprene (CR)—exclusive of binding/cover fabric

Quality anterior and posterior



Clamshell Packaging



1 LEVEL 1: PRIMARY PROTECTION

402 Knee Support w/ open patella

BEST FOR » Minor support helping to relieve pain and promote healing of tendonitis, bursitis, arthritis and other non-specific knee conditions

- Open knee design for added comfort around the patella
- Exclusive 5-needle stitch for a flatter, cleaner and stronger seam
- Seamless back-of-knee and anatomical design for added comfort
- Latex-free neoprene provides thermal/compression therapy
- Outer heavy-duty nylon fabric for durability
- Fits left or right

Color: Black

Sizes: S-2XL

Content: 100% latex-free 3.2mm neoprene (CR)—exclusive of binding/cover fabric

Stand your ground



Clamshell Packaging



1 LEVEL 1: PRIMARY PROTECTION

401 Knee Sleeve

BEST FOR » Minor support helping to relieve pain and promote healing of tendonitis, bursitis, arthritis and other non-specific knee conditions

- Exclusive 5-needle stitch for a flatter, cleaner and stronger seam
- Seamless back-of-knee and anatomical design for added comfort
- Latex-free neoprene provides thermal/compression therapy
- Outer heavy-duty nylon fabric for durability
- Fits left or right

Color: Black

Sizes: S-2XL

Content: 100% latex-free 3.2mm neoprene (CR)—exclusive of binding/cover fabric

Pull on and pull away



Clamshell Packaging

1 LEVEL 1: PRIMARY PROTECTION

510 Knee Sleeve / elastic

BEST FOR » Minor support and pain relief from arthritis, bursitis and tendonitis

- Provides compression and soft tissue support
- Elastic construction breathes for cool knees and is ideal for those with neoprene allergies
- Easy pull-on sleeve
- Fits left or right

Color: Black

Sizes: S-XL

Content: 65% polyester/25% rubber/10% nylon

Quick coverage



Clamshell Packaging



1 LEVEL 1: PRIMARY PROTECTION

441 Calf Sleeve

BEST FOR Reducing pain associated with calf strains, shin splints and varicose veins; aids recovery

- Contoured, pull-on, latex-free thermal/compression therapy and soft tissue support
- Exclusive 5-needle stitch for a flatter, cleaner and stronger seam
- Outer heavy-duty nylon fabric for durability
- Fits left or right
- Includes one sleeve

Color: Black

Sizes: S-XL

Content: 100% latex-free 3.2mm neoprene (CR)—exclusive of cover fabric

Compress and suppress the pain

3 LEVEL 3: MAXIMUM PROTECTION

493 Back Stabilizer

BEST FOR Core support and helping to relieve non-specific back pain

- Protects from strains and pulls with 6 steel stays strategically positioned for maximum support
- Vented elastic side panels feature hook and loop closures and neoprene wrap for custom fit and comfort
- Latex-free neoprene construction for thermal/compression therapy and soft tissue support

Color: Black

Sizes: Regular, Large

Content: 100% latex-free neoprene (CR)—exclusive of cover fabric; Panel: 90% nylon, 10% Lycra® (elastane)

Steel yourself against the world



Clamshell Packaging



Clamshell Packaging



1 LEVEL 1: PRIMARY PROTECTION

491 Waist Trimmer

BEST FOR » Core support and as part of a comprehensive weight loss program

- Helps relieve minor back pain and/or may enhance weight loss efforts via therapeutic heat
- Cushions, compresses, and supports lower back and abdominal muscles
- Latex-free neoprene construction for thermal/compression therapy and soft tissue support
- Adjustable hook and loop closures for custom fit and comfort
- Non-slip neoprene inner layer maintains positioning

Color: Black

Size: One Size

Content: 100% latex-free neoprene (CR)—exclusive of strap/cover fabric

The back-up plan



Clamshell Packaging



2 LEVEL 2: ADVANCED PROTECTION

5130 Elbow Sleeve / 4-way elastic w/ gel buttresses

BEST FOR » Breathable relief from arthritis, bursitis and tendonitis, especially golfer's elbow and tennis elbow

- Also designed for exceptional function in managing olecranon bursitis
- Bi-lateral gel buttresses provide soothing targeted compression
- 4-way stretch elastic material for increased compression and fit without heat retention
- Ideal for those with neoprene allergies
- Fits left or right
- Includes single sleeve

Color: Black

Sizes: S-XL

Content: 62% nylon/38% spandex (elastane)

Tennis and/or golf anyone?



2 LEVEL 2: ADVANCED PROTECTION

485 Elbow Support w/ strap

BEST FOR » Soft tissue support to help relieve painful tennis/golf elbow symptoms

- Adjustable hook and loop cinch strap for direct tendon pressure and support
- Anatomical design for added comfort
- Exclusive 5-needle stitch for a flatter, cleaner and stronger seam
- Fits left or right

Color: Black

Sizes: S-XL

Content: 100% latex-free 3.2mm neoprene (CR)—exclusive of binding/strap/cover fabric

Put your elbows on our table



2 LEVEL 2: ADVANCED PROTECTION

489 Elbow Strap w/ pads

BEST FOR » Helping to relieve painful tennis/golf elbow symptoms through targeted pressure

- Dual Sorbothane® pads provide targeted, pain-relieving pressure
- Latex-free, neoprene construction provides thermal/compression therapy and soft tissue support
- Adjustable hook and loop closure for secure fit and comfort
- Flat-seam construction for ultra comfort and contouring fit
- Fits left or right

EXCLUSIVE DESIGN

Color: Black

Sizes: S-L

Content: 100% latex-free 1.5mm neoprene (CR)—exclusive of binding/strap/pads/cover fabric

Elbow out pain



Clamshell Packaging



Clamshell Packaging



Clamshell Packaging



1 LEVEL 1: PRIMARY PROTECTION

512 Elbow Sleeve / elastic

BEST FOR » Support, helping to relieve pain and promote healing

- Mild compression for soft tissue support without heat retention
- Ideal for those with neoprene allergies
- Pulls on with ease
- Fits left or right
- Includes single sleeve

Color: Black

Sizes: S-XL

Content: 65% polyester/
25% rubber/10% nylon

Breathe a sigh of support

 Clamshell Packaging



3 LEVEL 3: MAXIMUM PROTECTION

454 Wrist Brace / adjustable

BEST FOR » Relieving pain from conditions such as carpal tunnel, arthritis, tendonitis and sprains

- Medical quality splint adds further support and stability
- Hook and loop closures for custom fit and comfort
- Best for back-to-work and play rehab
- Specify right or left wrist

Color: Black

Size: One Size

Content: 100% latex-free 3.2mm neoprene (CR)—exclusive of binding/straps/cover fabric

Light at the end of the carpal tunnel

 Clamshell Packaging



2 LEVEL 2: ADVANCED PROTECTION

513 Wrist Sleeve / adjustable / elastic

BEST FOR Support, pain relief and to
promote healing

- Mild compression for soft tissue support with less heat retention
- Adjustable strap allows for mild support, or vise-like bracing
- Elastic breathes and so will your wrist
- Ideal for those with neoprene allergies
- Fits left or right
- Includes single sleeve

Color: Black

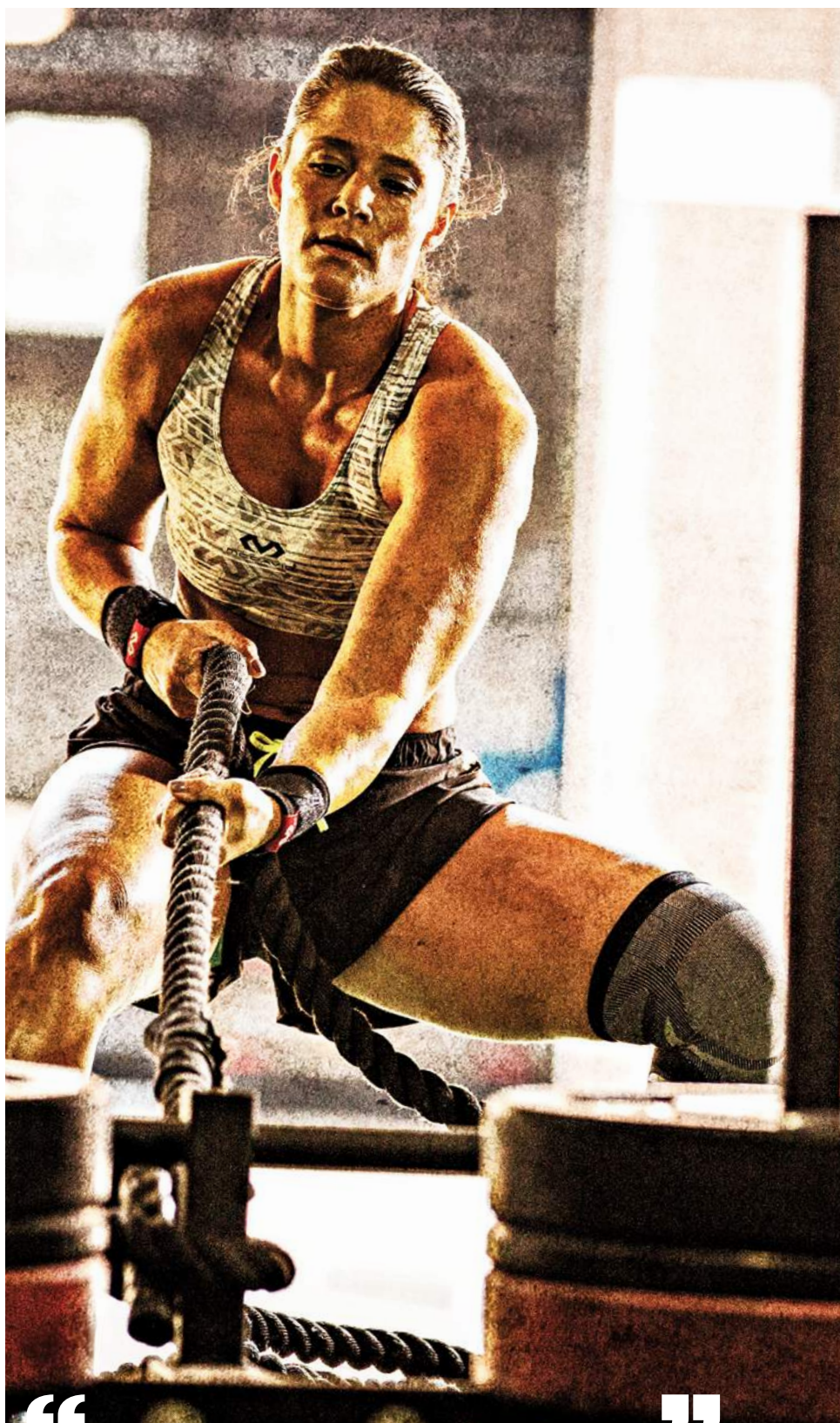
Sizes: S/M; L/XL

Content: 65% polyester/
25% rubber/10% nylon

Breathe easy with McDavid



Clamshell Packaging



“

”

With CrossFit, I know how easy it is to abuse yourself...
having done it more than a few times. So I'm smart enough
to rely on compression, support and recovery gear from McDavid.

EMILY
CrossFit Athlete



1 LEVEL 1: PRIMARY PROTECTION

451 Wrist Wrap / adjustable

BEST FOR » Wrist support, helping to promote healing and pain relief

- 4-way stretch provides thermal/compression therapy
- Hook and loop closures for custom fit and comfort
- Fits left or right

Color: Black

Size: One Size

Content: 100% latex-free 3.2mm neoprene (CR)—exclusive of binding/strap/cover fabric

It's all in the wrist action



Clamshell Packaging



1 LEVEL 1: PRIMARY PROTECTION

463 Shoulder Wrap

BEST FOR >

Helping to relieve pain and promote healing for non-specific shoulder injuries, arthritis and bursitis

- Easy-to-wear support helps decrease pain from pulls and strains
- Adjustable hook and loop closure straps apply direct compression to your AC joint
- Latex-free neoprene provides thermal/compression therapy
- Simple, light design makes it perfect for extended wear
- Fits left or right

Color: Black

Sizes: S-L

Content: 100% latex-free neoprene (CR)—exclusive of binding/straps/cover fabric

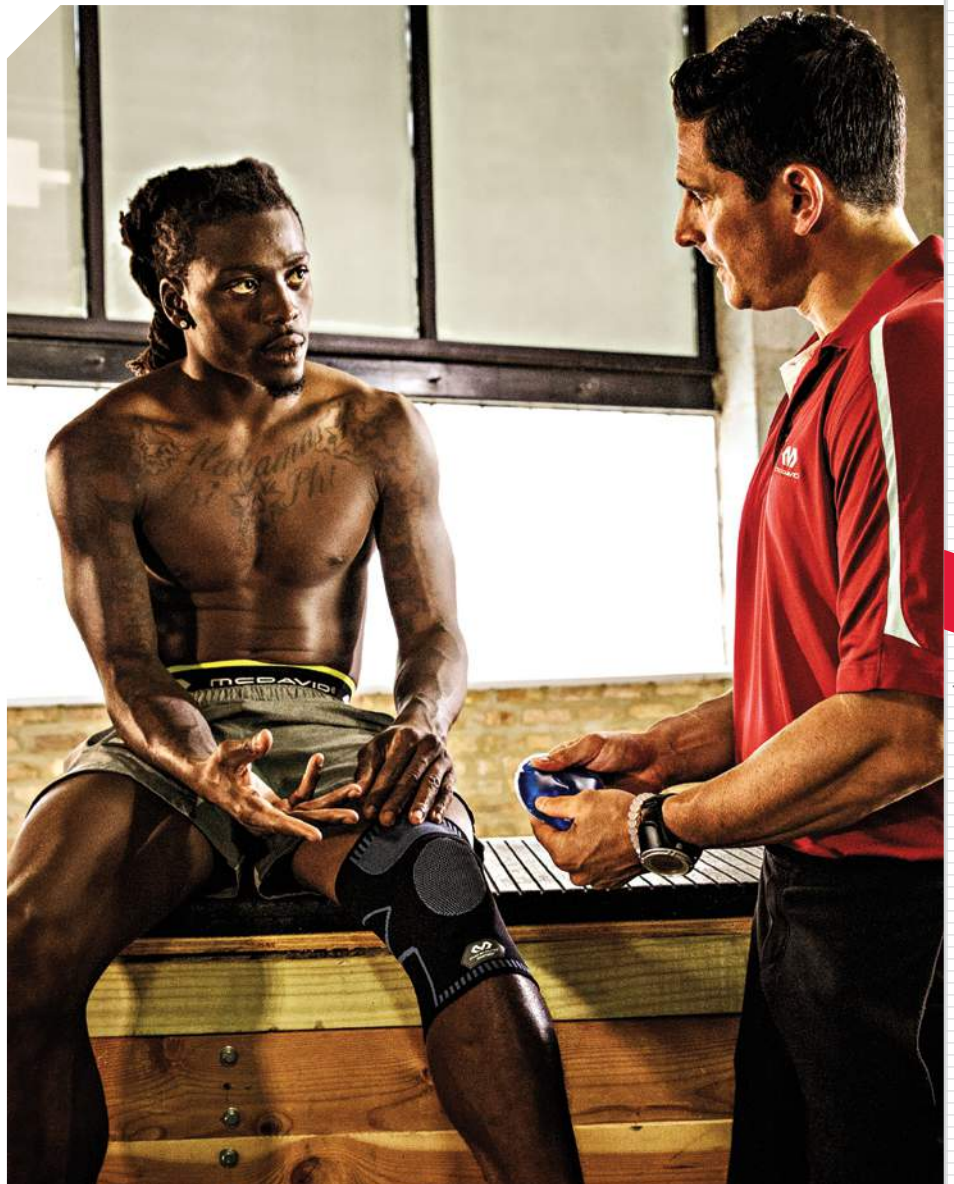
 Clamshell Packaging

Shrug off the pain

First **ON** Last **BOFF**

The athletic *mentality* has come a long way since “walk it off.” The science of **PHYSIOLOGY**, the evolution of **TRAINING** and the innovation of **SPORTS MEDICINE** all have offices at McDavid.

Dr. Marc Boff is our go-to Athletic Trainer bringing **YEARS OF EXPERIENCE** and thousands of singular experiences to our table. Our products have an Athletic Trainer DNA that makes them **FUNCTIONAL**, effective and simple to use. They may not be as charming as Marc, but they absolutely *do the job*.



SportMed® » ARM



THE ART OF TAPE

Athletic Tape

- Pro-quality, easy-tear 1.5" lightweight zinc oxide athletic tape • 1.5" x 10 yds. (stretched)
- 1.5" x 12.5 yds. (stretched)

Colors: Black; White



- 61002-01** Athletic Tape / 10 yds. / 2-Pack / clamshell/Black
61002-02 Athletic Tape / 10 yds. / 2-Pack / clamshell/White
61002-03 Athletic Tape / 10 yds. / 2-Pack / clamshell/Royal
61002-19 Athletic Tape / 10 yds. / 2-Pack / clamshell/Pink
61002-40 Athletic Tape / 10 yds. / 2-Pack / clamshell/Scarlett
61004 Athletic Tape / 10 yds. / 4-Pack / clamshell/White
61006-01 Athletic Tape / 10 yds. / 6-Pack / clamshell/Black
61006-02 Athletic Tape / 10 yds. / 6-Pack / clamshell/White
63330-01 Athletic Tape / 10 yds. / 2-Pack / Paper Sleeve /Black
63330-02 Athletic Tape / 10 yds. / 2-Pack / Paper Sleeve /White



Underwrap

- Save the day and the skin with pre-taping polyurethane foam on a roll

- 2.75" x 30 yds.

Colors: Black; Scarlet; Royal; Pink; Lime Green; Purple; Natural

AVAILABLE:

- | | | |
|----------------|------------------|----|
| 6330-42 | Underwrap/2-Pack | NT |
| 6330-01 | Underwrap/2-Pack | BK |
| 6330-03 | Underwrap/2-Pack | RO |
| 6330-40 | Underwrap/2-Pack | SC |
| 6330-19 | Underwrap/2-Pack | PK |
| 6330-41 | Underwrap/2-Pack | LG |
| 6330-09 | Underwrap/2-Pack | PU |



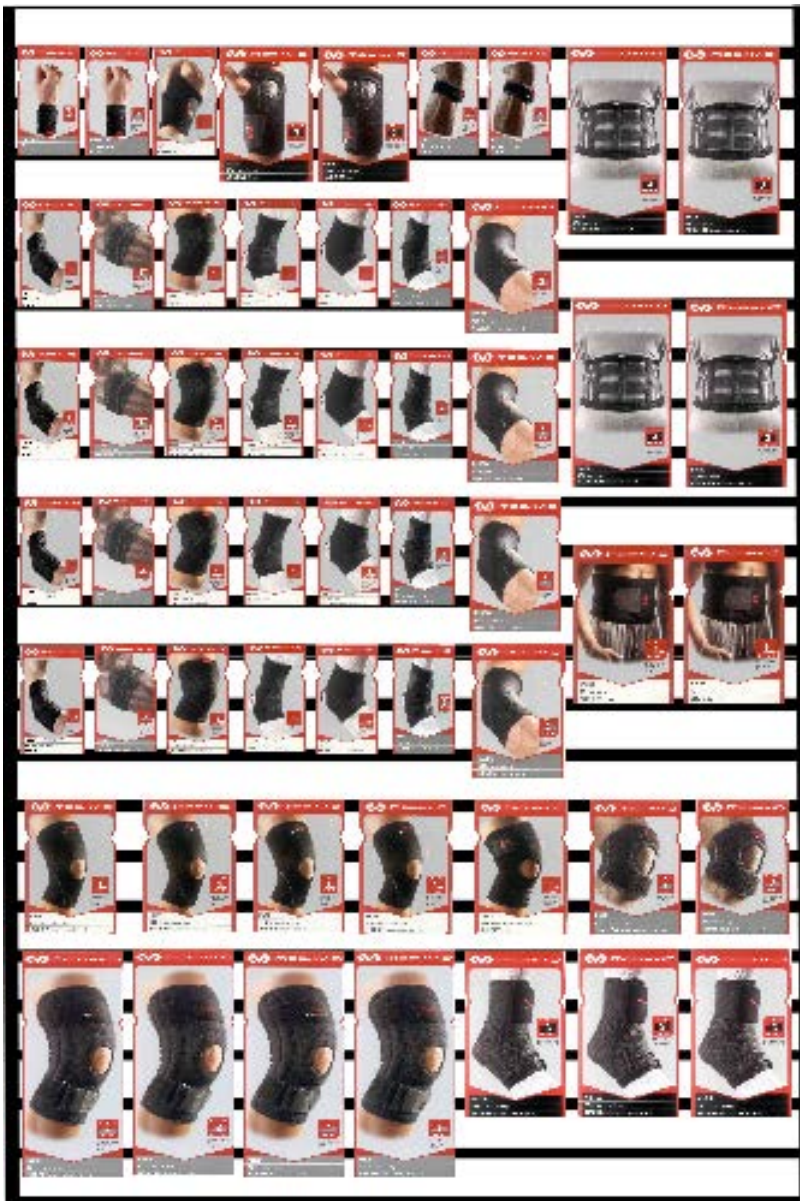
McDavid



2' x 6' Planogram

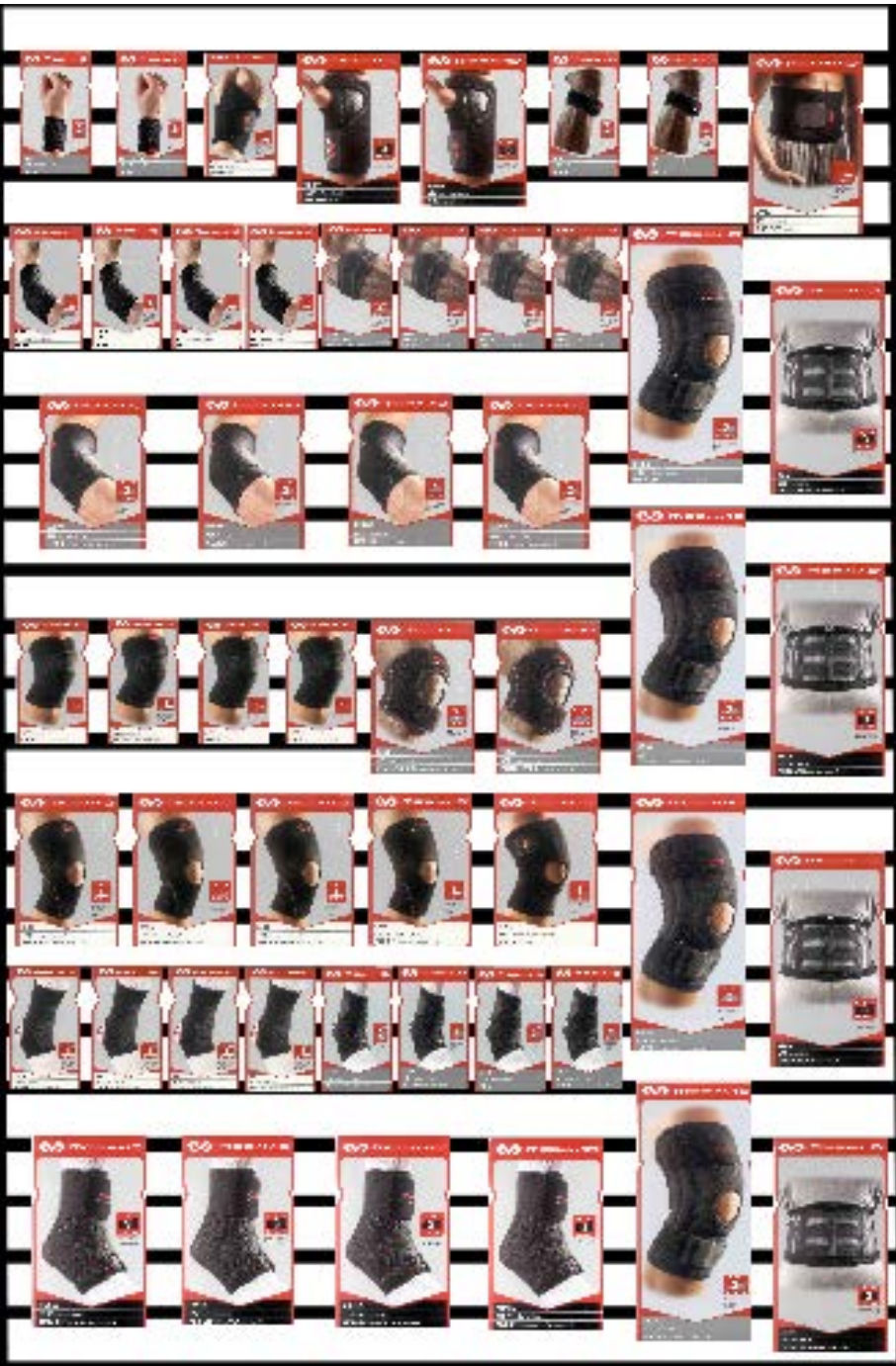
Product Code	Description	Quantity
1ST ROW LEFT TO RIGHT		
MD451	ADJ WRIST WRAP	2
MD513	WRIST SLEEVE ADJ ELASTIC SM/MD	2
MD513	WRIST SLEEVE ADJ ELASTIC LG/XL	2
MD454	ADJ WRIST BRACE - LEFT	2
MD454	ADJ WRIST BRACE - RIGHT	2
2ND ROW LEFT TO RIGHT		
MD489	ELBOW STRAP W PADS - SM	2
MD489	ELBOW STRAP W PADS - MD	2
MD489	ELBOW STRAP W PADS - LG	2
MD489	ELBOW STRAP W PADS - XL	2
MD414	KNEE STRAP / PATELLA - REG	2
3RD ROW LEFT TO RIGHT		
MD512	ELBOW SLEEVE / ELASTIC - SM	2
MD512	ELBOW SLEEVE / ELASTIC - MD	2
MD512	ELBOW SLEEVE / ELASTIC - LG	2
MD512	ELBOW SLEEVE / ELASTIC - XL	2
MD419	ADJ KNEE SUPPORT	2
4TH ROW LEFT TO RIGHT		
MD510	KNEE SLEEVE / - SM	2
MD510	KNEE SLEEVE / - MD	2
MD510	KNEE SLEEVE / - LG	2
MD510	KNEE SLEEVE / - XL	2
MD402	KNEE SUPPORT OPEN PAT - SM	2
MD402	KNEE SUPPORT OPEN PAT - MD	2
5TH ROW LEFT TO RIGHT		
MD511	ANKLE SLEEVE / ELASTIC - SM	2
MD511	ANKLE SLEEVE / ELASTIC - MD	2
MD511	ANKLE SLEEVE / ELASTIC - LG	2
MD511	ANKLE SLEEVE / ELASTIC - XL	2
MD402	KNEE SUPPORT OPEN PAT - LG	2
MD402	KNEE SUPPORT OPEN PAT - XL	2
6TH ROW LEFT TO RIGHT		
MD432	ANKLE SUPPORT WITH FIGURE 8 STRAPS	2
MD432	ANKLE SUPPORT WITH FIGURE 8 STRAPS	2
MD432	ANKLE SUPPORT WITH FIGURE 8 STRAPS	2
MD432	ANKLE SUPPORT WITH FIGURE 8 STRAPS	2
MD419	KNEE SUPPORT ADJUSTABLE - SM/MD	1
MD419	KNEE SUPPORT ADJUSTABLE - LG/XL	1
7TH ROW LEFT TO RIGHT		
MD421	KNEE SUPPORT WITH STAYS - SM	1
MD421	KNEE SUPPORT WITH STAYS - MD	1
MD421	KNEE SUPPORT WITH STAYS - LG	1
MD421	KNEE SUPPORT WITH STAYS - XL	1
MD493	BACK STABILIZER - MD	1
MD493	BACK STABILIZER - LG	1
MD493	BACK STABILIZER - XL	1

McDavid 4' x 6' Planogram - Option 1



Product Code	Description	Quantity
1ST ROW LEFT TO RIGHT		
MD513	WRIST SLEEVE ADJ ELASTIC SM/MD	2
MD513	WRIST SLEEVE ADJ ELASTIC LG/XL	2
MD451	ADJ WRIST WRAP	2
MD454	ADJ WRIST BRACE - LEFT	2
MD454	ADJ WRIST BRACE - RIGHT	2
MD414	KNEE STRAP / PATELLA - REG	2
MD414	KNEE STRAP / PATELLA - LG	2
MD493	BACK STABILIZER -SM	1
MD493	BACK STABILIZER -MD	1
2ND ROW LEFT TO RIGHT		
MD512	ELBOW SLEEVE / ELASTIC - SM	2
MD489	ELBOW STRAP W PADS - SM	2
MD510	KNEE SLEEVE / - SM	2
MD511	ANKLE SLEEVE / ELASTIC - SM	2
MD431	ANKLE SLEEVE - SM	2
MD432	ANKLE SUPPORT WITH FIGURE 8 STRAPS - SM	2
MD485	ELBOW SUPPORT W STRAP-SM	2
3RD ROW LEFT TO RIGHT		
MD512	ELBOW SLEEVE / ELASTIC - MD	2
MD489	ELBOW STRAP W PADS - MD	2
MD510	KNEE SLEEVE / - MD	2
MD511	ANKLE SLEEVE / ELASTIC - MD	2
MD431	ANKLE SLEEVE - MD	2
MD432	ANKLE SUPPORT WITH FIGURE 8 STRAPS - MD	2
MD485	ELBOW SUPPORT W STRAP-MD	2
MD493	BACK STABILIZER -LG	1
MD493	BACK STABILIZER -XL	1
4TH ROW LEFT TO RIGHT		
MD512	ELBOW SLEEVE / ELASTIC - LG	2
MD489	ELBOW STRAP W PADS - LG	2
MD510	KNEE SLEEVE / - LG	2
MD511	ANKLE SLEEVE / ELASTIC - LG	2
MD431	ANKLE SLEEVE - LG	2
MD432	ANKLE SUPPORT WITH FIGURE 8 STRAPS - LG	2
MD485	ELBOW SUPPORT W STRAP-LG	2
MD491	WAIST TRIMMER - OSFM	1
MD491	WAIST TRIMMER - OSFM	1
5TH ROW LEFT TO RIGHT		
MD512	ELBOW SLEEVE / ELASTIC - XL	2
MD489	ELBOW STRAP W PADS - XL	2
MD510	KNEE SLEEVE / - XL	2
MD511	ANKLE SLEEVE / ELASTIC - XL	2
MD431	ANKLE SLEEVE - XL	2
MD432	ANKLE SUPPORT WITH FIGURE 8 STRAPS - XL	2
MD485	ELBOW SUPPORT W STRAP-XL	2
6TH ROW LEFT TO RIGHT		
MD402	KNEE SUPPORT OPEN PAT - SM	2
MD402	KNEE SUPPORT OPEN PAT - MD	2
MD402	KNEE SUPPORT OPEN PAT - LG	2
MD402	KNEE SUPPORT OPEN PAT - XL	2
MD419	ADJ KNEE SUPPORT	2
MD419	KNEE SUPPORT ADJUSTABLE - SM/MD	1
MD419	KNEE SUPPORT ADJUSTABLE - LG/XL	1
7TH ROW LEFT TO RIGHT		
MD421	KNEE SUPPORT WITH STAYS - SM	1
MD421	KNEE SUPPORT WITH STAYS - MD	1
MD421	KNEE SUPPORT WITH STAYS - LG	1
MD421	KNEE SUPPORT WITH STAYS - XL	1
MD195	ANKLE BRACE W STRAPS - SM	1
MD195	ANKLE BRACE W STRAPS - MD	1
MD195	ANKLE BRACE W STRAPS - LG	1
MD195	ANKLE BRACE W STRAPS - XL	1

McDavid 4' x 6' Planogram - Option 2



Product Code	Description	Quantity
1ST ROW LEFT TO RIGHT		
MD513	WRIST SLEEVE ADJ ELASTIC SM/MD	2
MD513	WRIST SLEEVE ADJ ELASTIC LG/XL	2
MD451	ADJ WRIST WRAP	2
MD454	ADJ WRIST BRACE - LEFT	2
MD454	ADJ WRIST BRACE - RIGHT	2
MD414	KNEE STRAP / PATELLA - REG	2
MD414	KNEE STRAP / PATELLA - LG	2
MD491	WAIST TRIMMER - OSFM	2
2ND ROW LEFT TO RIGHT		
MD512	ELBOW SLEEVE / ELASTIC - SM	2
MD512	ELBOW SLEEVE / ELASTIC - MD	2
MD512	ELBOW SLEEVE / ELASTIC - LG	2
MD512	ELBOW SLEEVE / ELASTIC - XL	2
MD489	ELBOW STRAP W PADS - SM	2
MD489	ELBOW STRAP W PADS - MD	2
MD489	ELBOW STRAP W PADS - LG	2
MD489	ELBOW STRAP W PADS - XL	2
MD421	KNEE SUPPORT WITH STAYS - SM	1
MD493	BACK STABILIZER - SM	1
3RD ROW LEFT TO RIGHT		
MD485	ELBOW SUPPORT W STRAP-SM	2
MD485	ELBOW SUPPORT W STRAP-MD	2
MD485	ELBOW SUPPORT W STRAP-LG	2
MD485	ELBOW SUPPORT W STRAP-XL	2
MD421	KNEE SUPPORT WITH STAYS - MD	1
MD493	BACK STABILIZER -MD	1
4TH ROW LEFT TO RIGHT		
MD510	KNEE SLEEVE / ELASTIC - SM	2
MD510	KNEE SLEEVE / ELASTIC - MD	2
MD510	KNEE SLEEVE / ELASTIC - LG	2
MD510	KNEE SLEEVE / ELASTIC - XL	2
MD419	KNEE SUPPORT ADJUSTABLE - SM/MD	1
MD419	KNEE SUPPORT ADJUSTABLE - LG/XL	1
5TH ROW LEFT TO RIGHT		
MD402	KNEE SUPPORT OPEN PAT - SM	2
MD402	KNEE SUPPORT OPEN PAT - MD	2
MD402	KNEE SUPPORT OPEN PAT - LG	2
MD402	KNEE SUPPORT OPEN PAT - XL	2
MD419	ADJ KNEE SUPPORT	2
MD421	KNEE SUPPORT WITH STAYS - LG	1
MD493	BACK STABILIZER - LG	1
6TH ROW LEFT TO RIGHT		
MD511	ANKLE SLEEVE / ELASTIC - SM	2
MD511	ANKLE SLEEVE / ELASTIC - MD	2
MD511	ANKLE SLEEVE / ELASTIC - LG	2
MD511	ANKLE SLEEVE / ELASTIC - XL	2
MD432	ANKLE SUPPORT WITH FIGURE 8 STRAPS - SM	2
MD432	ANKLE SUPPORT WITH FIGURE 8 STRAPS - MD	2
MD432	ANKLE SUPPORT WITH FIGURE 8 STRAPS - LG	2
MD432	ANKLE SUPPORT WITH FIGURE 8 STRAPS - XL	2
7TH ROW LEFT TO RIGHT		
MD195	ANKLE BRACE W STRAPS - SM	1
MD195	ANKLE BRACE W STRAPS - MD	1
MD195	ANKLE BRACE W STRAPS - LG	1
MD195	ANKLE BRACE W STRAPS - XL	1
MD421	KNEE SUPPORT WITH STAYS - XL	1
MD493	BACK STABILIZER - XL	1



GLOSSARY OF McTERMINOLOGY

At McDavid, **we know** what we're talking about and we want to be sure **you know** what we're talking about. Use this glossary of terms to identify and target your McDavid needs and wants.

› BREATHABILITY

Also, **Moisture Management**. The ability of a fabric to **wick** or **draw** perspiration away from the skin and rapidly **evaporate** it via capillary, chemical or electrostatic actions.

› CIRCULAR KNIT

Also, *Tubular Knit*.

Knitting technique with specialized equipment creating an **anatomical, seamless fit**.

› COMPRESSION

High tenacity stretch fabric used in close fitting garments to provide muscles with a distinct firmness that **lessens vibrations**, increases **blood flow** and reduces **lost energy**. McDavid uses only high tenacity yarns offering both 4-way stretch and recovery. Compression apparel is ideal for enhancing muscle **performance** and accelerating muscle **recovery**.

› ELASTANE

A hybrid fiber containing the properties of **maximum** elasticity and memory with **minimal** weight.

› EVAPORATIVE COOLING EFFECT

Wicking fabric embedded with **hydrophilic polymer** rings that expand with heat energy from the skin, causing a decrease in **skin surface temperature**.

› GRADUATED COMPRESSION

Known in McDavid-speak as **Targeted Compression™**. This technology utilizes the fabrics and principles of general compression, but focuses on a **specific area** of the body. Graduated or Targeted compression utilizes higher levels of compression at the ankles, and reduced compression at the calves allowing **proper blood flow** back to the heart for faster re-oxygenation of the blood, which translates to **faster recovery**.

› KINESIOLOGY

The study of the **mechanics** of physical **movement**.

› MERCURY (MMHG)

Mercury or **mmHg** is a type of measurement, often in millimeters, for yarn and sock compression support. Different ranges of mercury (pressure) equate to levels of compression applied to a specific area of the body. For example, compression socks/sleeves are rated between **10** and **50 mmHg** (millimeters of mercury, not real mercury). A compression sock containing ranges of mercury that fall between **10-23mmHg** help to improve circulation and increase blood flow, ultimately reducing the build-up of **lactic acid** from in the muscles. More than **23mmHg** is usually used for medical purposes requiring a doctor's prescription.

› MEDICAL-GRADE

You've likely heard the term "**medical grade**" compression kicked about quite a bit. The truth is, many brands create their own definition of medical grade, which is just another way to describe a level of graduated or **Targeted Compression**. At McDavid, we engineer our socks to provide the same great benefits of medical grade compression (increased blood flow, decreased swelling), but at a level that's more **comfortable** for athlete to wear for **extended periods**. And, no prescription required.

› MONOCENTRIC HINGE (SINGLE AXIAL)

The most secure method to restrict damaging movements and absorb impact energy. This design most efficiently protects the knee from direct lateral forces—like the forces common to football, hockey, soccer, etc.

› NATURALLY ANTI-MICROBIAL

Yarns or fabric that are naturally anti-microbial incorporate a natural element like silver, or zinc, that **never washes out**. This means it stays **100% effective** for the life of the product. Another way to incorporate anti-microbial properties is to apply a chemical coating. This is much less effective because it washes out. McDavid uses natural anti-microbial yarns in our socks. This **inhibits** unhealthy micro-organisms and bacteria that cause **odor**. On the ground, in the locker room and in the pre-game huddle, stink (technically speaking) is reduced and/or eliminated.

› POLYCENTRIC HINGE (MULTI-AXIAL)

Complex engineering that closely mimics the movement of the knee with **less restriction**. This hinge design accommodates the majority of athletes needing knee reinforcement.

› POLYTETRAFLUORO-ETHYLENE (AKA, PTFE)

Synthetic **fluoropolymer** of **tetrafluoroethylene** with numerous sports, medical and houseware applications.

› TECHNICAL / SPECIALTY YARNS

These are yarns with **unique materials** or properties woven into them. They are created to provide a higher level of performance and function to an elite athlete. For example, at McDavid, we have added **zinc** and **seaweed yarns** to our sock/leg sleeve collection for quick drying and enhanced comfort.

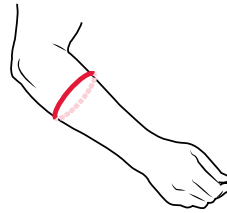


MEASURE TRUE



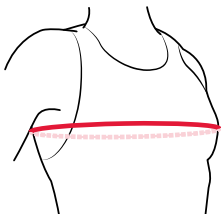
WRIST

Keeping wrist straight, measure directly over joint including wrist bones.



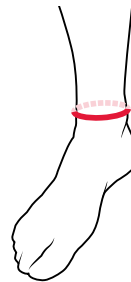
FOREARM

With your arm slightly flexed, measure the fullest part of your forearm, typically midway between your wrist and elbow.



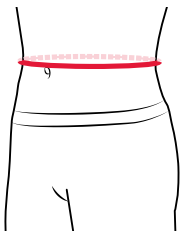
CHEST

Stand and measure around the fullest part of your chest. Tape should be parallel with the floor. (No Super Hero chest puffing.)



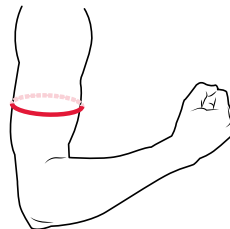
ANKLE

Stand and measure the circumference directly around the joint (the knobby bits). If you measure while seated, flex your foot slightly back toward yourself and measure just above joint.



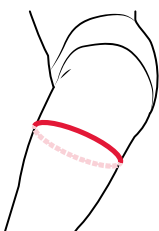
WAIST

Stand with stomach relaxed (c'mon, you're among friends here). Measure the minimum circumference (skinniest part) in the waist area. Tape should be parallel with the floor.



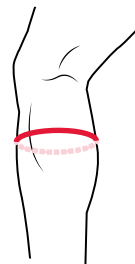
BICEP

With your arm slightly flexed (remember, "slightly"), measure the fullest part of upper arm/bicep. When ordering a pair, take measurements on both arms and use the average of the results.



THIGH

Stand and measure the maximum circumference (meatiest part) of your upper leg near the crotch.



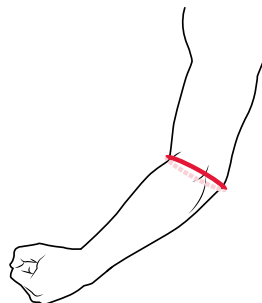
CALF

Stand and measure the calf in question (you knew this). Measure at the fullest part of the calf. When ordering a pair, take measurements on both calves and use the average of the results.



KNEE

Measure the knee to be protected (you likely figured that). Stand and bend your leg just less than 45 degrees, measure around the largest part of knee, directly over the patella (kneecap)



ELBOW

Bend your elbow to approximately 45 degrees and measure directly over the joint. When ordering a pair, take measurements on both elbows and use the average of the results.



SPORTMED™ » ANKLE:

LACED ANKLES { 195 / 199 / A101 }

SIZE:

Men's shoe size:
Women's shoe size:

XS

6-7
7-8

S

8-9
9-10

M

9-11
10-12

L

11-13
12-14

XL

14-15
15-16

ANKLE V { 197 }

SIZE:

Men's shoe size:
Women's shoe size:

S/M

7-10
8-11

L/XL

10-15
11-16

PLANTAR FASCIA SUPPORTS { 5135 / 439 }

SIZE:

Men's shoe size:
Women's shoe size:

S/M

6-11
7-12

L/XL

11-16
12-16

ANKLE SUPPORTS { 431 / 432 / 511 / 5115 / 5122 / 6301 / 461 / 5132 / 5134 / 5142 }

SIZE:

Men's shoe size:
Women's shoe size:

S

6-9
7-10

M

9-11
10-12

L

11-13
12-14

XL

14-15
15-16

SPORTMED™ » KNEE:

KNEE BRACES AND SUPPORTS { 401 / 402 / 403 / 404 / 410 / 421 / 422 / 425 / 428 / 429 / 429X / 510 / 5116 / 5125 / 6300 / 5133 / 5140 / 5141 }

SIZE:

Knee circumference:

S

12-14" / 30-36cm

M

14-15" / 36-38cm

L

15-17" / 38-43cm

XL

17-20" / 43-51cm

2XL

20-22" / 51-56cm

KNEE SUPPORT / ADJUSTABLE AND DOUBLE WRAP { 4195 / 4192 / 409 }

SIZE:

Knee circumference:

S

12-14" / 30-36cm

M

15-17" / 38-43cm

L

18-20" / 46-51cm

KNEE SUPPORT / ADJUSTABLE { 419 }

SIZE:

Knee circumference:

S/M

12-15" / 30-38cm

L/XL

15-20" / 38-51cm

KNEE STRAP { 414 }

SIZE:

Knee circumference:

REG

13-16" / 33-41cm

L

17-21" / 43-53cm



SPORTMED™ » THIGH / CALF:

THIGH SLEEVES { 471 / 472 / 514 / 4193 }

SIZE:

Thigh circumference:

S

18-20" / 46-51cm

M

20-22" / 51-56cm

L

22-25" / 56-64cm

XL

25-28" / 64-71cm

CALF SLEEVE { 441 }

SIZE:

Calf circumference:

S

12-14" / 30-36cm

M

14-15" / 36-38cm

L

15-17" / 38-43cm

XL

17-18" / 43-46cm

SPORTMED™ » BACK / WAIST:

BACK SUPPORTS { 493 / 495 / 496 / 5119 }

SIZE:

Waist size:

M (REG)

27-42" / 69-107cm

L

36-52" / 91-132cm

SPORTMED™ » ARM:

ELBOW SUPPORTS { 482 / 483 / 485 / 489 / 512 / 5130 / 6302 / 5143 }

SIZE:

Elbow circumference:

S

8-9.5" / 20-24cm

M

9.5-11" / 24-28cm

L

11-12" / 28-30cm

XL

12-14" / 30-36cm

WRIST SLEEVE { 513 / 5131 }

SIZE:

Wrist circumference:

S/M

Under 7" / 18cm

L/XL

Over 7" / 18cm

SHOULDER SUPPORT { 462 }

SIZE:

Chest size:

REG

30-36" / 76-91cm

L

36-50" / 91-127cm

SHOULDER WRAP { 463 / 5126 }

SIZE:

Chest size:

S

30-36" / 76-91cm

M

36-42" / 91-107cm

L

42-50" / 107-127cm



Working Together...To Help Others



Terms & Conditions

NET 30 ACCOUNTS

1. All "net 30" invoices are payable within 30 days of shipping date. A charge of 2% per month will be added to all invoices outstanding for more than 30 days.
2. A handling charge of \$25 will be assessed for all "NSF" cheques.
3. All new accounts will be shipped on a prepaid or COD basis until credit approval is obtained.

PAYMENTS

1. Pay oldest invoice first.
2. Include invoice or statement stub with payment.
3. Discount prices are available only to customers with no past due accounts.

SHIPPING POLICY

1. Delivery to carrier constitutes delivery to purchaser. Claims for missing merchandise must be filed by the recipient within three (3) business days of the expected date of delivery.
2. Orders of \$500 or more before taxes within Ontario (\$800 or more outside Ontario) are exempt from ground shipping charges. Orders that include liquids, gels, Renfrew Professional Trainers Tape, Hot/Cold Packs and ice bags are not eligible for this offer.

RETURN AND REPLACEMENT POLICY

1. Merchandise may not be returned without our approval. Please obtain a return authorization number before returning an item.
2. All returns are subject to inspection.
3. A 25% restocking fee will be applied to all returns, unless the item returned is being exchanged for another of the same type but a different size or color.
4. Shipping for all authorized returns and for exchanged items to be paid by the customer.
5. Include a note explaining the reason for return, purchase date and invoice number.
6. Products purchased with initial stocking order may be exchanged within three (3) months without a restocking fee.
7. Except for initial orders as stated above, products must be returned within 30 days.
8. Repairs must be clean and dry or they will be returned to you without repair.
9. Custom or special sized products may be returned for modification only, not for credit or refund.
10. ALL RETURNS MUST BE IN SALEABLE CONDITION AND IN ORIGINAL PACKAGING.

PRICE CHANGES

1. **All prices are subject to change without notice.**